

lighting today

Volume 1 | January - March 2023

White Collar Factory

This project showcases
human-centric lighting system. **p16**





ON THE COVER

White Collar Factory

Photo credits: ERCO GmbH

Photo copyright: © ERCO GmbH, www.ercoco.com,

photography: Martina Ferrera

OTHER TITLES BY
TRADE LINK MEDIA PTE LTD
(www.tradelinkmedia.biz)

Bathroom + Kitchen Today
Southeast Asia Building
Southeast Asia Construction
Security Solutions Today

CALL FOR SUBMISSIONS

Press releases, proposals for stories, and product development literature should be submitted by email to the editor at:
lighting@tradelinkmedia.com.sg

ASSOCIATE PUBLISHER
Eric Ooi
eric.ooi@tradelinkmedia.com.sg

EDITOR
Amita Natverlal
lighting@tradelinkmedia.com.sg

MARKETING MANAGER
Felix Ooi
felix.ooi@tradelinkmedia.com.sg

HEAD OF GRAPHIC DEPARTMENT/
ADVERTISEMENT COORDINATOR
Fawzeeah Yamin
fawzeeah@tradelinkmedia.com.sg

CIRCULATIONS EXECUTIVE
Yvonne Ooi
yvonne.ooi@tradelinkmedia.com.sg

LIGHTING TODAY IS PUBLISHED BY

TRADE LINK MEDIA PTE LTD
101 Lorong 23 Geylang
#06-04 Prosper House
Singapore 388399

For interest in advertising and advertorials,
please attention your query via:
direct call: +65 6842 2580

ISSN 2345-7147 (Print) and
ISSN 2345-7155 (E-periodical)

This publication is published four times a year and
available on the digital platform.

To download a free digital copy,
visit lt.tradelinkmedia.biz.

DISCLAIMER

All advertisers and contributors must ensure all promotional material and editorial information submitted for all our publications, must be free from any infringement on patent rights, copyrights laws in every jurisdiction. Failure of which, they must be fully liable and accountable for legal consequences (if any) that may arise.

The editor reserves all right to omit, amend or alter press releases submitted for publication. The publisher and editor are unable to accept any liability for errors or omissions that may occur in this process, although every effort has been taken to ensure that all information is correct at the time of going to press. Edited articles or stories are returned to contributors for check on facts at the sole discretion of the editor. No portion of this publication may be reproduced in whole or part without written permission of the publisher. The editor reserves all rights to exclude or refuse submissions at any time without prior written or verbal notice if contributing parties do not provide complete text and supporting images at a minimum of 300dpi in .jpeg and .tiff format.

Dear Readers,

Welcome back from your long break and happy new year to all of you. Our latest issue looks at the topic of human-centric lighting. It is a lighting concept that benefits human health and well being through colour temperatures and illuminance levels. It is growing in popularity worldwide. We showcase two buildings that have utilised human-centric lighting in their premises. Starting from this year, every issue of LT will have an exclusive interview with a lighting designer. In Volume 1, we get to know more about Christopher Mok, Managing Principal, Spectrum Design and Associates (Asia) and his work. In addition, we have put together the latest news and products for you to read and stay updated. If you have any comments or feedback, feel free to drop me an email at lighting@tradelinkmedia.com.sg. Please take care and we wish you a lovely 2023 ahead!

Amita Natverlal
Editor

VOL 2 / 2023 TOPICS

- **Architectural Lighting:** Schools & Sports Facilities Projects
- **Trends in Lighting:** Smart Lighting
- **Spotlight:** Exclusive Lighting Designer Interview
- **Lighting Product Showcase:** Smart Lighting, Outdoor Lighting, Indoor Lighting, LED Lighting, Lamps / LED, Ballast / Transformers, Lighting Controls, Emergency/ Exit

25 - 27 January 2023**Light-Tech Expo**

Tokyo International Exhibition Centre, Tokyo, Japan

Website: <https://www.neventum.com/tradeshows/light-tech-expo>**2 - 4 March 2023****INALIGHT 2023**

JIExpo Kemayoran, Jakarta, Indonesia

Website: <https://inalight-exhibition.net/upcoming-event/inalight-event-2023/>**6 - 9 April 2023****Hong Kong International Lighting fair (Spring Edition)**

Hong Kong Convention and Exhibition Centre, Hong Kong

Website: <https://www.hktdc.com/event/hklightingfairse/en>**18 - 23 April 2023****Euroluce 2023**

Fiera Milano, Milan, Italy

Website: <https://www.salonemilano.it/en/exhibitions/euroluce>**21 - 25 May 2023****LightFair 2023**

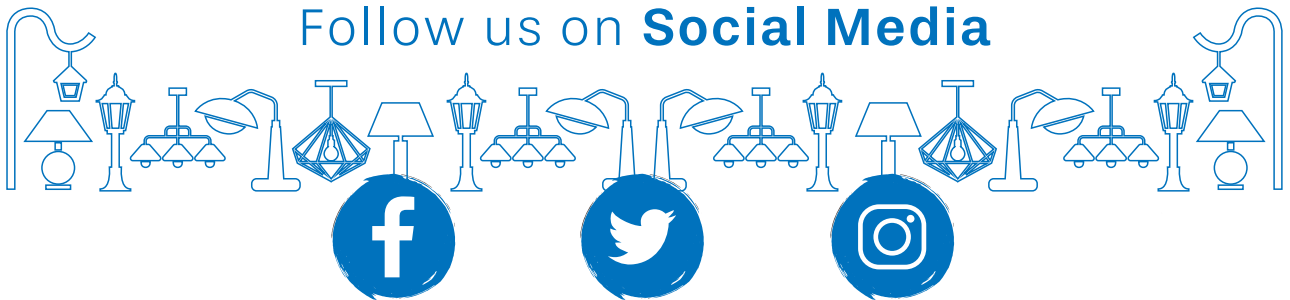
The Javits Center, New York, NY USA

Website: www.lightfair.com**9 - 12 June 2023****Guangzhou International Lighting Exhibition (GILE) 2023**

China Import & Export Fair Complex, Guangzhou, China

Website: <https://guangzhou-international-lighting-exhibition.hk.messefrankfurt.com/guangzhou/en.html>**26 - 29 July 2023****ARCHIDEX 2023** *(see show ad on page 28)*

Kuala Lumpur Convention Centre, Kuala Lumpur, Malaysia

Website: <https://archidex.com.my>Follow us on **Social Media**

[www.facebook.com/
LightingToday](http://www.facebook.com/LightingToday)

[www.twitter.com/
LightingToday](http://www.twitter.com/LightingToday)

[www.instagram.com/
lightingtodaysg](http://www.instagram.com/lightingtodaysg)



Connacht GAA Centre of Excellence in Began, Ireland p12



White Collar Factory in London, UK p16

contents

03 EVENTS CALENDAR

05 LIGHTING IN THE NEWS

TRENDS IN LIGHTING (HUMAN-CENTRIC LIGHTING)

12 Connacht GAA Centre of Excellence in Began, Ireland

16 White Collar Factory in London, UK

SPOTLIGHT: EXCLUSIVE LIGHTING DESIGNER INTERVIEW

20 Interview with Christopher Mok, Managing Principal, Spectrum Design and Associates (Asia)

22 PRODUCT SHOWCASE

2023 ArchLIGHT Summit opens registration, call for speakers



Photographer: Scott Hagar

Dallas, USA – ArchLIGHT Summit, the new lighting trade event and educational platform for the architectural, specification and design communities, has opened exhibitor registration and a call for speakers. The next event, taking place Tuesday, September 19 and Wednesday, September 20, 2023, will welcome lighting designers, architects, interior designers, specifiers and students to review new products, network, and attend a wide range of seminars.

Dallas Market Center launched ArchLIGHT Summit in September 2021, the first in-person commercial lighting event held in nearly two years, establishing a platform for product innovations from leading lighting exhibitors and a robust educational programme. The event built on this success for the second edition in September 2022 with a 22 percent increase in exhibitor participation and a 34 percent increase in attendance.

Said Cindy Morris, President and CEO of Dallas Market Center: “We invite the community of lighting decision makers and thought leaders to join us for our fall show when we will unite products, people and purpose to create better business.”

For exhibitors, the next edition of the show will present the unique opportunity to reach the architectural,

specification and design communities seeking commercial lighting brands that represent the leading edge of innovation and technology. The expo portion of ArchLIGHT Summit on the first floor of the Trade Mart will feature exhibitors representing all facets of the commercial lighting spectrum.

Speakers are also invited to submit proposals consistent with the show’s mission to be boldly different and actively inclusive. The most sought-after sessions will be those that break the mould of traditional presentations and panels, in favour of more experiential learning and honest discussions. To submit a proposal, visit <https://archlightsummit.com/speakers/>.

Dozens of existing architectural lighting brands at Dallas Market Center and a robust local specification community prompted the development of the annual ArchLIGHT Summit, which has broadened offerings to include commercial specification brands in addition to those already present in Dallas that straddle residential and commercial markets. The city’s central location and accessibility is conducive to a broad geographic reach, creating new opportunities in the wake of announcements of other western regional shows being permanently canceled.

ArchLIGHT Summit organisers

work closely with an Advisory Board of distinguished industry leaders who provide valuable perspectives for shaping this groundbreaking event and its educational programming. Members include Craig A. Bernecker, Ph.D., founder of The Lighting Education Institute; Michelle Cruz, Lighting Specifier Sales at Putterman Scharck & Associates; Andrea Hartranft, FIALD, principal of Hartranft Lighting Design; Archit Jain, IALD, LEED SP, ISLA, principal of Oculus Light Studio; Kelly Roberts, LEED BD+C, IES, studio director of Wald Studio; Shahad Sadeq, Assoc. AIA, Executive Director of AIA’s Springfield, MO, chapter; and Laura McDonald Stewart, FASID, RID, LEED AP, WELL AP, founder and owner of Laura McDonald Enterprises and PLiNTH & CHiNTZ.

Association partners include the American Institute of Architects Dallas chapter, American Lighting Association, Illuminating Engineering Society Dallas section, Lighting Controls Association, National Association of Innovative Lighting Distributors, National Lighting Bureau, North American Coalition of Lighting Industry Queens, and national and local chapters of Women in Lighting + Design.

For more information, visit www.ArchLIGHTSummit.com.

ETC illuminates Nantong Grand Theatre

China – Nantong Grand Theatre is a signature landmark that was newly established in 2021. It is the largest project invested in by the China government in an effort to boost art and cultural development in Nantong of the Jiangsu Province. The theatre is situated in the city centre, a central hub for innovative businesses.

The theatre was designed by the late master architect Paul Andreu who was also the chief architect of the National Centre for the Performing Arts in China. The magnificent architecture was designed with the theme of “An Instrumental Mountain with Pearly Waters” featuring five shining flower petals shimmering on Zilang Lake.

The modern cultural hub reaches 57 metres high, with two floors underground and seven above. The theatre takes up 111,000 square metres and houses five main venues, including an opera house, a concert hall, a drama hall, a children's theatre, and a multipurpose function hall.

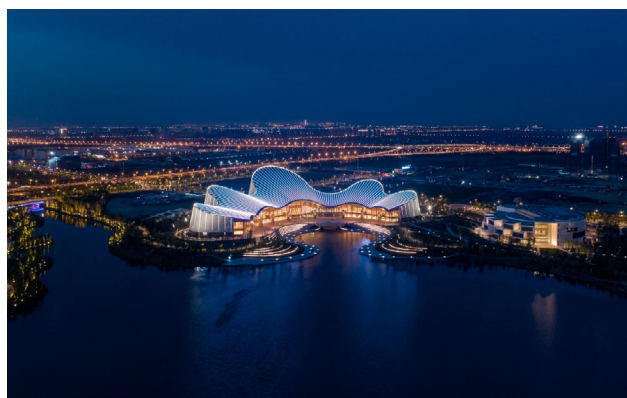
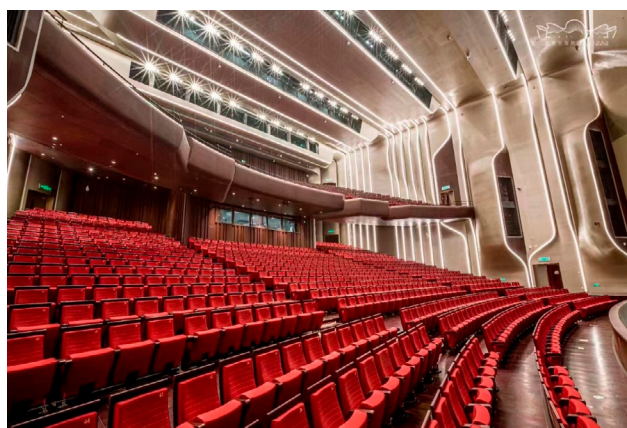
Nantong Grand Theatre is equipped with ETC gear, including controls, lighting fixtures, dimmers, and a networking system. Two sets of versatile, yet compact, GIO @5 consoles with 4K output are installed in the multipurpose function hall to provide a reliable controlling experience for different events and occasions. The venue owner also picked Ion XE 20 with 2K output for the concert hall and the children's theatre. All ETC consoles run on the same Eos system so users can enjoy an identical and seamless operating experience no matter which venue they are controlling. “Our team was impressed by the powerful magic sheet functionality because Eos makes programming, control, and playback much easier than before,” the venue owner commented.

Source Four LED Series 2 Lustr with CYC adapters equip the Opera House, lighting up the stage and creating a beautiful mood-enhancing effect. Additional Source Four LED luminaires are selected for the concert hall, drama hall, and other venues in the Nantong Grand Theatre.

Thanks to the addition of a lime-green LED emitter in ETC's x7 Color System, the unique LED array increases the lumen's output in open white and lighter tints. It also broadens the range of colour rendering in the red and blue ends of the colour spectrum, so that brighter and livelier colours can be created for professional opera performances which require a high standard of lighting effects. The venue owner was amazed by the nuance and vivid colours attributed to the unique LED array created by ETC.

To provide stable and reliable dimming control for the renowned art and cultural hub, Sensor3 Power Control system with ThruPower modules is used. This system is able to manage the power of all types of lighting fixtures installed including incandescent, moving light, LED circuits, switched loads, motor loads, and constant circuits. Concert software is the operating system for Sensor3 and provides a clear picture of real-time power status of all the equipment. Stage managers can make any necessary adjustments to the brightness quickly and effectively.

Excellent network infrastructure supports the best operation of the theatre. ETC's Response Mk2 DMX Gateway



Photos credit: Nantong Grand Theater and Hangzhou YiDaShi Technology Development Co., Ltd.

was selected and successfully provides stable, reliable, and lightning-fast DMX and RDM data distribution for the lighting network. The plug-and-play and easy-to-use platform ensure smooth and efficient performance on all the stages.

ETC is proud to provide comprehensive lighting technology and enhance the lighting quality for all the professional and international performances to stage in the Nantong Grand Theatre.

LMPG Inc. acquires Lumca Inc.

Montreal, Quebec, Canada – LMPG Inc., formerly known as Lumenpulse Group Inc., a leading specification-grade LED lighting solutions group, recently announced that it has acquired Lumca Inc, a privately-owned, pure-play innovative LED lighting solutions provider in the site and area market. The sister brand 'BrightLife by Lumca', specialised in intelligent connectivity solutions, is also part of the acquisition by LMPG Inc.

Founded over three decades ago, Lumca has a very strong and well-established history as a manufacturer of site and area lighting for municipalities and urban environments. Renowned as a leading manufacturer that strikes the perfect balance between aesthetics, practicality, and sheer innovation, Lumca's innovation-driven mindset has allowed them to push the limits of lighting technology and architecture to whole new levels. Their sister brand, BRIGHTLIFE by Lumca, is a comprehensive connectivity solution provider that enables cities to aesthetically integrate all the latest technologies – both hardware and software – as the foundation for smart city infrastructures.

"As part of our growth strategy, LMPG is excited to be furthering its offerings in the site and area lighting market. The addition of both Lumca and BRIGHTLIFE brands to our portfolio will translate in a deeper penetration of the market, addressing the wide range of solutions and needs that this segment requires. The solutions designed, engineered, and manufactured by Lumca are impressive and we look forward to leveraging these innovations across LMPG," said François-Xavier Souvay, Founder, President, and CEO of LMPG Inc.



Lumca will continue to be managed as an independent business entity and will benefit from LMPG's innovative technologies, its supply chain capabilities, and operational strategies.

"This marks an exciting new milestone for Lumca. We are very proud to join LMPG Inc., a company centred on people and innovation, just as ours is. We are looking forward to leveraging the expertise of LMPG to accelerate the development of our solutions, while continuing to address the municipal sector and urban environments," said Dennis Dion, Head of Sales at Lumca.

With the addition of Lumca and BRIGHTLIFE, LMPG Inc. now consists of seven strong lighting solutions brands, establishing its leading position in a wide range of specification-grade lighting applications.

Principal Industries announces acquisition of SloanLED

San Angelo, Texas, USA – Principal Industries, a leading provider of electrical components and services to the commercial sign industry, recently announced the acquisition of SloanLED, a California-based specialist in highly engineered LED solutions to the signage, retail, hospitality, and petroleum markets.

This acquisition strengthens and diversifies Principal's product portfolio in new and existing end markets while expanding its footprint in and outside North America.

Steve Shotwell, President & COO of SloanLED, said, "I look forward to combining the strengths of two market leaders and providing our customers with the best and most innovative product solutions, services, and support, across all of our business segments around the world."

"The Vincent brothers and I are beyond excited to welcome SloanLED into the Principal family. Bringing together the two most highly regarded LED brands in the industry gives us access to a vast array of capabilities," stated Principal Industries CEO, Todd Fiske. "This will accelerate our development of innovative and useful solutions while striving to simplify the lives of our customers."

SloanLED's long history, industry reputation, and culture will be a great addition to our industry-leading brands, which include Principal LED, Principal Services, Ventex Technology, and LED Wizard.



Main Light becomes one of the first in the US to acquire Ayrton Zonda 9 FX fixtures

Paris, France – Main Light increased its rental inventory of Ayrton lighting fixtures with the purchase of a large complement of versatile new Zonda 9 FX fixtures. The company currently has offices in Delaware, Tennessee, and Las Vegas, with a fourth location coming February 2023 to Teterboro, NJ. Main Light has seen a steady demand for its Ayrton Perseo, Khamsin and Diablo fixtures, which were acquired during the past two years from ACT Entertainment, the exclusive distributor of Ayrton lighting in North America.

Main Light's acquisition of Zonda 9 FX represents one of the first investments by a US company in the luminaire. Designed for a multitude of applications, Zonda 9 FX is the first in a new family of products for stage lighting equipped with a high-performance 40W LED source with RGB+W additive colour synthesis. Zonda's LED/optical system combination can produce a powerful light output of 25,000 lumens and a homogeneous mixture of pastel and saturated colours. It serves as a powerful wash light while delivering 3D volumetric effects via individual control of each LED. Its high-definition LiquidEffect creates complex 2D and 3D graphical effects, which can be coupled with beam, wash or matrix applications.

"We were eager to add to our mix of Ayrton products based on the reliability of the fixtures we have and the support that ACT offers," says Randy Mullican, CEO of Main Light. "We

saw Zonda at Prolight + Sound, and it filled a gap for us in large-format LED wash fixtures, which also offer tremendous pixel control and new and exciting effects. Zonda promises to be a great wash with the added bonus of effects."

Mullican expects Zonda 9 FX to attract lighting designers looking for "a bright wash with special effects capabilities for entertainment and large conferences."

No sooner were the new fixtures delivered than they were dispatched to the Formula One US Grand Prix's annual race at Austin's Circuit of the Americas where Ed Sheeran performed his first US show in four years.

"We're thrilled that Main Light continues to invest in Ayrton and the other technologies ACT Entertainment represents, and furthermore we're certain that both the reliability and popularity of the Zonda 9 FX will serve Main Light well. It's always such a pleasure to work with Randy and his team and to have such an excellent partner in Main Light," says ACT's director of sales, Doug Mekanik.

Mullican reports that Main Light intends to buy more Zonda 9 FX fixtures, and he can count on ACT "to always provide a great level of support for our purchases. ACT already provided technical support on the effects side of Zonda 9 FX, including training our staff so we'll have a knowledge base of the fixture's effects tools to share with customers."



Main Light is one of the first companies in the US to invest in Ayrton Zonda 9 FX.

Showlight 2023 postponed



Théâtre Municipal at the heart of Fontainebleau.

It is with great sadness that the Showlight Committee announces the postponement of Showlight 2023. The popular quadrennial networking event was due to take place in Fontainebleau, France from 20th – 23rd May 2023.

In a statement from Showlight, Chairman John Allen explains the reasons behind this decision:

“It is after lengthy consideration and with much deliberation that we have decided to postpone Showlight 2023. The plans and preparations for Showlight in Fontainebleau have been underway since 2018 and although the Covid lockdown took two years out of our work, it was always our intention to hold Showlight in 2023 following the lifting of Covid restrictions.

“Fontainebleau is a beautiful

town with an intimate theatre and a wonderful chateau as well and it is an ideal place for our quadrennial event. Plans progressed with this aim in mind. However, developments over recent weeks have raised concerns about the viability of holding Showlight next year. The major problem is that of costs for the event which have risen considerably at a time when inflation in the UK and across Europe is rising.

“When we first budgeted for Showlight in Fontainebleau, in 2018, the future looked good, but the combination of Covid, the current political and economic state in Europe, and more recently, uncertain final costs for the event, have put Showlight in severe jeopardy of failure, both with the standard of our unique event and also in

its cost.

“As a result, the directors of Showlight Ltd have decided that we need to postpone next May’s event. I know that this will come as a shock to many, I am also very disappointed and quite despondent that we have had to reach this decision but there is no alternative at present.

“I would like to thank all those who have wholeheartedly supported us in our work so far and the delegates who so faithfully return to Showlight on each occasion. In the early part of 2023 we will be holding a committee meeting to determine where Showlight goes from here and will keep you updated with all future plans.

“Thank you for your support and understanding.”

Pharos introduces 'Expert' at Light + Building

London, UK – Pharos Architectural Controls unveiled 'Expert'; a new lighting control solution at Light + Building exhibition 2022.

Expert is an all new, innovative and straightforward control solution centred around a single, reliable, set-and-forget controller. A lighting control system that behaves the way you work, with expertly designed hardware that simplifies installation, and commissioning software that makes programming easy. Expert guides users through setting up their system and creating their lighting design with clear, easy to follow helpers and walkthroughs.

Expert offers effortless control of decorative and functional lighting, while bringing artistic and dynamic control to even the most complex of lighting designs. Beautiful architecture can be accentuated, welcoming ambient spaces can be created, and stunning colours and movement can dazzle. Expert makes light of it.

Benefiting from all the expertise Pharos has in dynamic lighting for architecture, the Expert range – comprising of Control, Touch, Repeat and Switch – is designed and built to the same standard of quality and reliability for which Pharos is renowned.

Expert Control is a compact DIN rail enclosure with solid-state hardware for 24-7 operation and reliability. With up to 1024 channels of eDMX, two local DMX ports, a DALI port and two



Photo provided by Pharos Architectural Controls.

pairs of IO onboard, combined with simple networking for programming, installation-friendly connectors and test mode options, it's a practical solution for dynamic architectural lighting.

The elegant Expert Touch is the accompanying wall station, ideal for projects that require frequent user interaction. The 5" touch screen provides automatically generated pages to access lighting controls, based on programming in each space, to activate scenes and adjust intensity.

Expert Repeat is a convenient DMX splitter for output distribution, and Expert Switch delivers PoE networking. Both are designed to coordinate with Expert Control in the same form factor and branding.

The Expert commissioning software

is a brand-new programming platform, designed from scratch to provide all the tools clients need. With innovative approaches to scheduling and triggering lighting, and with fixtures, scenes and stations all belonging to their spaces, Expert software simplifies managing installations, luminaires and lighting design.

Spaces allow users to manage their fixtures intuitively – from one canvas to nested rooms and zoned areas, fixtures are naturally grouped where they are located. Scenes enable lighting designs to be fulfilled, ranging from just colour and intensity, through to creative effects and sequences that can be subtle, ambient, or dramatic. States are an innovative new approach to managing how lighting events are activated, with choices determined by logical combinations of tagged states – making set-up simple.

Jack Neill, Product Manager for Expert & Cloud at Pharos Architectural Controls said: "At Pharos, we are always innovating and looking for ways to expand our portfolio with ground-breaking solutions.

"Expert is demonstrative of where we are breaking the mould; offering our clients innovative lighting control that balances technological advancements with simplicity of use and cost effectiveness.

"It is an honour to launch our new solution at the industry-leading Light + Building exhibition, which is the ideal platform for showcasing latest developments – especially those with such huge potential. We are excited to see Expert being used in projects and our clients reaping the benefits of this excellent new offering."



Photo provided by Pharos Architectural Controls.

Smartvet Veterinary Clinic in Bydgoszcz has invested in multifunctional LED lighting from Lena Lighting



Photo credit: Lena Lighting

Poland – The lighting of veterinary clinics, where treatments are often made on small, lively animals, requires a special approach. Modern lighting solutions ensure, among other things, that surfaces can be sterilised using UV-C technology. Lighting can also be used to create an atmosphere, positively influencing the emotions of visitors to the facility. This type of solution was used at the Smartvet clinic in Bydgoszcz.

Perfectly fitting, energy-efficient lighting is an indispensable piece of equipment in a modern veterinary clinic. Light sources in the form of new-generation LED modules not only help to reduce electricity consumption, but also provide excellent visibility, which is essential in the clinic's day-to-day work.

However, a veterinary clinic should not only guarantee safety and comfort, but also create an appropriate atmosphere. Often visits here are accompanied by high levels of stress caused by the illness of a beloved pet. In some rooms, it is the light

that can have a positive effect on calming emotions. It is also important to influence the overall impression of visitors to the facility. Modern lighting design and the choice of lamps with a distinctive design make a significant difference to the image of the space. In the case of the Smartvet clinic in Bydgoszcz, the Solanto and Baris LED luminaires were chosen to give the space character and at the same time provide pleasant, comforting light.

In contrast, in surgeries where various types of surgery or major operations are carried out, luminaires characterised by high luminous efficacy and energy efficiency, such as Terra 2 LED and Compact LED EVO, were used.

In medical facilities, the sterility of rooms and instruments is an equally important issue. This is why veterinary clinics are increasingly using complex lighting systems that combine lighting functions with surface sterilisation. This innovative solution has just been used by the Smartvet clinic, which, in addition to highly energy-efficient LED fittings, has invested in Sterilon Square UV-C luminaires from Lena Lighting. These products are based on ultraviolet radiation (UV-C) to remove viruses and bacteria from the environment.

“The Smartvet clinic has invested in energy-saving lighting based on new-generation LED module technology. These luminaires have a high luminous efficiency with low electricity consumption and present a distinctive design. The entire facility has been designed with great taste, and the perfectly chosen light colour makes it extremely pleasant to stay in. In addition, our dual-purpose Sterilon Square have been installed in the clinic, which, in addition to providing lighting, provide extremely effective surface sterilisation. Customers can therefore be sure that the Smartvet clinic's approach to cleanliness and animal safety is innovative and above-standard,” says Lukasz Drewka, Investment Director at Lena Lighting.



Photo credit: Lena Lighting





World's largest sports air dome

Beken, Ireland

PROJECT NAME

Connacht GAA Centre of Excellence

PROJECT LOCATION

Beken, Ireland

PROPERTY SIZE

15,000 square metres

COMFORTCLICK PRODUCTS

Grinder Black

PHOTOS

Courtesy of ComfortClick

The world's largest sports air dome is fully controlled and automated using ComfortClick bOS.

About the project

An indoor playing facility was in Connacht GAA plans for a long time and in 2017 the decision to have an air dome was made. A few months later their managers were flying to Finland to learn from the country setting the standard for air-supported structures. In Finland they got familiar with local smart sports domes build by DBS and centrally operated by ComfortClick's bOS and got firmly decided on the concept.



Project description

On July 2020, Slovenia-based company DBS Engineering, tasked with constructing the actual structure, sent five employees, to be aided by a few local hands, and their work was completed within a month of arriving, all in the midst of a global pandemic. According to the project specification, the team decided to integrate the systems in the air dome using KNX and Modbus. For controlling and automation ComfortClick's Grinder Black server was chosen and the whole visualization was done on the bOS software.



Project objectives

The world's largest sports air dome had to be fully automated, have all crucial equipment and systems fully integrated with automatic lighting, heating regulation, air pressure, fan speed, smoke detection, energy consumption monitoring, and video surveillance (IP Cameras). Additionally, the dome had to be easily controlled via computers and local wall panels, as well as from different mobile devices.







White Collar Factory

London, UK

PROJECT NAME

White Collar Factory

PROJECT LOCATION

London, UK

CLIENT

Allford Hall Monaghan Morris Office,
London, United Kingdom

ARCHITECTURE

Allford Hall Monaghan Morris Office,
London, United Kingdom

LIGHTING DESIGN

Allford Hall Monaghan Morris Office,
London, United Kingdom

PRODUCTS

Atrium, Jilly, Lucy, Pantrac, Casambi

PHOTO CREDITS

ERCO GmbH

PHOTO COPYRIGHT

© ERCO GmbH, www.ercos.com,
photography: Martina Ferrera

Working without windows: AHMM uses ERCO lighting technology to transform a basement into a vibrant and dynamic workspace.

White Collar Factory may be one of London's most pioneering new office developments, but its basement was never intended to become a workspace. However when plans to turn this space into a restaurant failed to materialise, the building's architects, Allford Hall Monaghan Morris (AHMM), saw an opportunity to challenge previous assumptions. This 983-square-metre space, whose only source of daylight comes from four small skylights, has been cleverly transformed into a flexible creative hub for 110 of AHMM's own staff, all thanks to a human centric lighting scheme legalized with an innovative lighting system from ERCO.

The fitout is very much in keeping with the experimental spirit in which the building was envisioned. Inspired by the expansive and adaptable workspaces of Frank Lloyd Wright's iconic Johnson Wax Headquarters, AHMM and developer Derwent London had embarked on a five-year research project to prove that new-build offices can be every bit as inspiring as converted industrial buildings. White Collar Factory is the result of that research. With its large, flexible floor plates and high ceilings – not to mention an entrance lobby that doubles as a co-working lounge and a 150-metre rooftop running track – the building sets a new standard for the sector.

The basement was of course more difficult to turn into a functional office than the storeys above, which all boast full-height openable windows. But it also had features that



the others didn't, like an eight-metre floor-to-ceiling height, which created the feeling of a grand hall. This was enough to convince AHMM co-founder and design principal Simon Allford that the space could become an extra studio for the practice's growing team. "Fundamentally it had everything we would look for in a project, except windows," he says. "We take the idea that no space is impossible, every space can become magical. It becomes a design exercise about making that work."

Supporting circadian rhythms

With the limited amount of daylight on offer, ERCO's human-centric lighting system plays an important role in bringing natural variation to the workspace over the course of a day. While other lighting systems can create a fixed blanket of illumination, that's not the case here. The Atrium Double Focus pendants help to support the circadian rhythm, with dimming capability, tunable white light and glare control. These can-shaped pendants bring the high ceilings into the lighting scheme, casting illumination both up and down to create the appropriate mood for different moments. They are supported by Jilly track downlights in the single-storey spaces, which use wide and oval beam distributions dedicated to work environments. This allows large spacings between the luminaires. The track downlights ensure that light is directed only to the places where it's needed, to increase visual comfort.

Pantrac track lights also feature, illuminating the walls to make the space feel more open and expansive. This increases the perceived brightness of rooms, since humans' perception is stimulated more by illuminated vertical surfaces rather than by light on a horizontal plane.

"You look at scene-setting, you look at the changing nature of the body," says Allford. The goal, he explains, is to show it's possible to create dynamic lighting conditions even when you're dealing with a windowless space, offering an alternative to the standardised lux settings prescribed by the industry. In this way, the lighting becomes a research project of its own. "You're looking at the impact of light, rather than the fittings," he states. "It's this idea that you're not looking at holes in the ceiling, you're looking at sources of light landing on surfaces."

A flexible work environment

The changing nature of today's workplace, particularly in light of Covid-19, meant that flexibility had to be ingrained within the interior from the outset. One way AHMM achieved this was Jack, a modular system consisting of box-like plywood cassettes. The Jack system makes it possible to create meeting rooms that can be taken down and reconfigured in a matter of hours. Here, this means that the office can be adapted as the





size of the team grows or shrinks.

The ERCO system supports this need for flexibility. On the one hand with the Casambi Bluetooth control system. Using an iPhone or iPad, the Bluetooth-enabled luminaires can be easily programmed to suit new layouts. Additionally, the track downlights can be physically rearranged with ease, by simply mounting them in a different part of the track. Each desk is also equipped with its own Lucy task light, giving employees more control over their immediate environment. “It’s a theatrical idea of flexibility,” says Allford. “It’s about personality and character. You can move a wall, you can move a light, you can change your light source, so people can remake their environment depending on their mood.”

New ways of working

As London begins its recovery from the pandemic, AHMM staff are now adjusting to routines that combine a return to the office with some continued working from home. Meanwhile Allford is gearing up for a period of change, combining architectural practice with a two-year term as president of the Royal Institute of British Architects (RIBA). The architect believes that the new, more flexible models of working will only serve to strengthen the creative culture in office buildings like White Collar Factory.

“Years ago, in a famous furniture shop, I saw this sign that said, work is not a place you go, it is a thing you do,” he said. “You could say the pandemic reinforced that idea, but I fundamentally disagree. I think work is a place you go to do things. That idea of leaving your home, coming into a different kind of environment and meeting with people is the culture of creativity. It’s absolutely vital.”



Christopher Mok. Photo Credit: Tan Hai Han

Interview with **Christopher Mok**, Managing Principal, Spectrum Design and Associates (Asia)

LT: Tell us briefly about your background.

Christopher: I am a trained theatre lighting designer and reached out to architectural lighting after completing my MFA degree in architectural lighting design from the Parsons School of Design in 1996. I have been actively involving in lighting design with projects covering Hong Kong, China, Japan, Philippines, Malaysia, Macau, Indonesia, Dubai, Canada, USA and UK. I started Spectrum Design & Associates (Asia) based in Hong Kong with a team of dedicated designers using Light as design tools to enhance our living environments.

LT: What made you become a lighting designer?

Christopher: I have been fascinated by Light since when I was a boy. Playing a shadow game at home was one of the most interesting things I could think of. Somehow, I am destined to be a lighting designer from then I guess.

LT: What sort of projects does your company do?

Christopher: We covering full range architectural projects from exterior, landscape, facade lighting, master planning, theme park to interior lighting for hotel, restaurants, office, residential

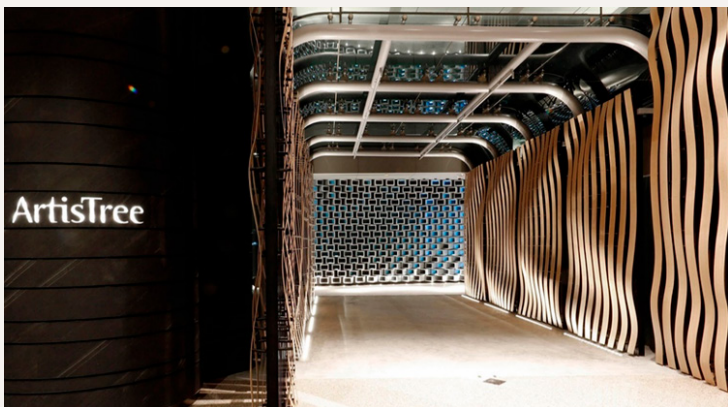
developments, private residence, government buildings, health care facilities, performing arts centre, museum, gallery, exhibition, religious facilities, office tower developments, shopping malls, retails etc. Spectrum also touches on life event lighting design, show lighting and lighting installation arts.

LT: Which project are you most proud of working on, and why?

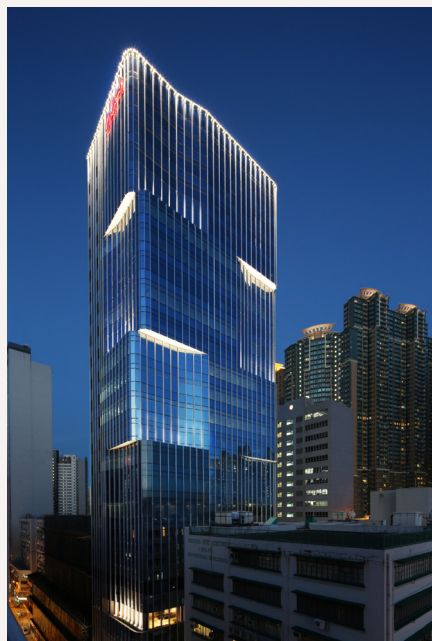
Christopher: We love what we have created and always looking for the next better lighting project to come.

LT: What trends are you seeing in lighting design?

Christopher: The lighting design business is changing the way how people look at light in our everyday life and it is evolving as well. The lighting technology seems to be leading the way in how we design light and lighting. However, I personally still think that it is for human beings that we shall focus on how light lives with us. Lighting design is not for only creating effects, mood or excitement but more for elevating the human living quality. Lighting designer is responsible to take the lead on this aspect no matter how technology is advancing.



The ArtisTree
Credits:
Lighting Designer: Spectrum Design & Associates (Asia)
Interior Designer: VIA Architecture Ltd.
Photo: VIA Architecture Ltd.



Maxim Headquarters, Hong Kong
Credits:
Architect: ARK Associates Ltd
Photo: ARK Associates Ltd.

“ The lighting technology seems to be leading the way in how we design light and lighting. ”
 - Christopher Mok



The Continental at Pacific Place Hong Kong
Credits:
Lighting Designer: Spectrum Design & Associates (Asia)
Interior Designer: David Collins Studio Ltd. UK
Photo: David Collins Studio Ltd. UK



FEAST at Hong Kong's EAST Hotel
Credits:
Interior Designer: Conran and Partners
Photo: Conran and Partners

Hospitals use 2-in-1 Emergency LED T8 and T5 tubes to add instant emergency lighting



G4 Emergency T8

G3 Plus Emergency T8

Photo credit:
Aledra Inc.

Renton, WA, USA – Emergency lighting is a must for all hospital facilities, but the solutions thus far are backup power generators and standard “non-attractive” emergency light fixtures. During a power outage, it takes 4 to 8 seconds before the generators start and activates that emergency circuit light. Backup generators have a fixed capacity and provide emergency power to a fixed number of lights and equipment, thus are not scalable for adding more emergency light fixtures.

Today, hospital facility and physical plant managers have available a NEW type of Automatic Self-Test (30 seconds monthly & 90 minutes annually) and Self-Diagnostic (notifies customer when the tubes are in test mode and when it needs to be replaced) emergency lighting that they can quickly and easily install in all their facilities. In addition, the Self-Testing and Self-Diagnostic features will save the facility time and money by eliminating the monthly audits. Aledra’s Gen4 Emergency LED T8 and T5 Tubes are the NEW additions to the emergency lighting products that are available to medical facilities across the United States. The Gen4 EM T8 and T5 emergency tubes Operate like a standard LED tube, that can be turned ON/OFF and when there is a power interruption it goes into an emergency mode. The internal lithium battery provides 90 minutes of emergency lighting. The Aledra G4 tubes eliminate the 4 to 8 second delay issue and can be installed in areas that additional emergency lighting may be required or needed.

“We are delighted to see large number of hospitals using our Gen4 Emergency T8 and T5 tubes,” according to Matthew Maa, VP Aledra. “They always start the deployment with

the operation rooms first since they are the mission-critical areas. After that, the facilities managers discover the Gen4 EM T8 doesn’t take up any of the backup generator load, and thus can be used anywhere in the hospital. Then, they began to upgrade the emergency lighting equipment with Gen4 EM T8 everywhere, such as hallways, stairwells, and offices. What really tilt the scale is when the facilities managers found that that Gen4 EM T8 can perform the 30-second monthly and the 90-minute annual audit tests *completely automatically* without any manual intervention. This means they can catch up their audit schedule on emergency lighting equipment without spending any labor. That’s a life saver for them.”

Key features of Gen4 EM T8 and T5 Emergency LED Tubes are:

- **Automatically Self-Testing:** (30) second monthly test and (90) minute annually test.
- **Self-Diagnosis with Flashing Indicator:** This feature alerts the end user that the tube is in test mode (LED light on end cap flashes slowly) and if it is time to replace the tube.
- Easy to install in existing light fixtures.
- Eliminates costly monthly and annual audits.
- Testing Button allows the tubes to be tested manually.

In addition to Gen4 EM T8 and T5 which are used for ON/OFF applications, Aledra also offers the Gen3 Plus EM T8 that have all the features of the G4 but is for ALWAYS ON applications (hallways and stairwells).

LightArt launches new architectural fixtures



Acoustic Baffle. Photo credit: LightArt

USA – LightArt launched two new minimalist architectural fixtures designed with the brand’s latest acoustic lighting technology. As designer demand for linear sound-dampening fixtures and narrow aperture lighting grows, Acoustic Stratta and Acoustic Baffle answer the call with the most slender and sophisticated design to date.

Imagined for high-traffic commercial spaces, the slim but mighty fixtures – whether specified as an individual piece or in a row – integrate seamlessly into everything from corporate gathering spaces to school auditoriums, and healthcare hallways to hotel lobbies.

Acoustic Stratta

After launching Static Links acoustic lighting collection in June 2022, LightArt was inspired to add to its

acoustic linear fixture portfolio with updated construction and capabilities. Acoustic Stratta now offers sound absorption up to 11 sabins.

Acoustic Stratta’s narrow aperture and slim profile enhances the environment without distracting from it. Acoustic Stratta’s LED platform also includes warm dimming and EM battery option, packing a punch in such a small fixture. Plus, with uplight, downlight, and unlit capabilities, Acoustic Stratta can create different moods to subtly enhance a designer’s vision.

Acoustic Stratta’s minimal design, allows users to join continuous rows, making it flexible and connectable for continuous ceiling applications. Acoustic Stratta’s forward-thinking design demonstrates how LightArt integrates the Align sustainability

initiative into every product innovation.

Acoustic Stratta is available in 22 Sola Felt colours with optional Ash or Oak wood end caps. The fixture is offered in 250lm/ft up to 1050lm/ft in 80 and 90 CRI and in 2700K-4000K CCT with a UGR <19.

Acoustic Baffle

For designers seeking cost-conscious, high-quality acoustic options, Acoustic Baffle is an ideal solution. Engineered with the same top-of-the-line acoustic features in Acoustic Stratta, Acoustic Baffle offers the latest technology in a budget-friendly sound-dampening baffle. For an acoustic product with such a slim, narrow profile, Acoustic Baffle has an astoundingly high reverberation impact, with a high number of sabins per fixture and a variable NRC (Noise Reduction Coefficient) that depends on spacing. Each baffle offers the same absorption as 16 square feet of typical Acoustical Ceiling Tile (ACT). Plus, its minimalist designs allows specifiers to create linear rows or shapes across any ceiling.

“Acoustic Baffle has a streamlined, pared-down construction, offering increased acoustic performance at a cost conscious price point,” says Edwin Vice, LightArt’s Director of R&D.

Acoustic Baffle is available in six sizes in one-foot increments between 3 feet and 8 feet. Acoustic Baffle is also available in 22 Sola Felt colours from soft neutrals to vibrant jewel tones.



Acoustic Stratta. Photo credit: LightArt

ETi Solid State Lighting introduces light fixtures with plasma disinfection technology proven to kill bacteria and viruses, including SARS-CoV-2, the virus that causes COVID-19



Wheeling, Illinois, USA – ETi Solid State Lighting Inc., an industry-leading manufacturer of LED lighting systems and luminaires, recently announced a new line of LED light fixtures proven to kill bacteria and viruses, including SARS-Cov-2, the virus that causes COVID-19.

The SilentAire Plasma Disinfection Lighting product line is an innovative breakthrough in safe air disinfection technology. Combining ambient LED illumination with revolutionary patent-pending, built-in “cold” plasma bipolar ionization technology, the SilentAire plasma line-up includes LED flush mounts, down lights, flat panels, and more that are ideal for virtually any indoor residential, commercial, or industrial application. No special operation or installation is required for any of the fixtures, and they are all easily controlled by a standard wall switch. Standard features include dimmability, up to five colour temperature selections (CCT), and multiple working mode options.

All SilentAire plasma products are safe for continuous use in occupied spaces and pose no risk to people, pets, or plants.

Independent third-party laboratory testing conducted by Innovative Bioanalysis in Costa Mesa, CA confirmed that SilentAire plasma disinfection light fixtures actively kill and inactivate viruses and bacteria at a kill rate of over 99.9 percent, including SARS-CoV-2, the virus that causes COVID-19. *

“These lab results confirm that plasma technology is a safe and effective solution for improving air quality and reducing the spread of airborne pathogens. We’re very excited about the application potential for the SilentAire plasma technology, as it can be applied to virtually any indoor environment,” stated

Eva Chan, CEO of ETi Solid State Lighting, Inc.

“Our plasma disinfection light fixtures essentially bring pristine mountain air, indoors. Ions have long been known as ‘nature’s filter’ because of their ability to clear the air of airborne pathogens. Adding ions into a room immediately improves not just the air quality in terms of removing particles, pet dander, and dust, but it also removes odours and VOCs, in addition to killing bacteria and viruses, including COVID-19. Bipolar ionization is a safe, all-natural solution for improving air quality and reducing the spread of airborne pathogens.”

Pathogens such as the SARS-CoV-2 virus survive on particles as small as 0.1 microns, rendering them nearly impossible to capture via standard and even HEPA filters. Plasma bipolar ionization technology is the only all-natural, safe air disinfection solution that successfully targets particles smaller than 0.3 microns. The patent-pending plasma technology utilised by ETi Solid State Lighting is the first of its kind to be effectively incorporated into light fixtures as an active air treatment solution.

SilentAire Plasma Disinfection Light Fixtures are now available and in stock via ETi Solid State Lighting commercial & retail channels. SilentAire fixtures have been granted EPA approval and registration (No.: 9917-CHN-1).

* SilentAire Plasma Disinfection Light Fixtures have been thoroughly tested and proven to kill bacteria and viruses, including SARS-CoV-2, the virus that causes COVID-19, at a kill rate of +99.9 percent.

LEDtronics Bi-Pin based miniature LED light bulbs perform above and beyond the incandescents they replace

Torrance, California, USA – LEDtronics® announces updates to its long-time series of Midget Bi-Pin LED Miniature bulbs, a product category it has been manufacturing for over 25 years. With an input voltage of 24/28 VDC and wattage of only 0.42, they are designed to directly replace industry-standard T1-3/4 (5mm) bayonet-based 7327 and 7387 incandescent lamps, with up to 90 percent energy savings.

The BPF200-028V Series comes in an array of colour options – 3000K Warm White, 8000K Cool White, 525nm Aqua Green, 612nm Super Orange, 660nm Ultra Red, and 595nm Super Yellow, offering viewing angles ranging from 80 to 120 degrees. They operate on a current of 0.015 amps, producing maximum candela ranging from 0.075 to 1.4 cd.

The BPF200 product category also includes operating voltages of 5VDC and 12/14VDC with similar color options.

Unlike the incandescent lamps they replace, these rugged LED bulbs are virtually impervious to shock, vibration and temperature extremes. They use a tiny fraction of the energy, generate only minimal heat, and provide sharper, higher-intensity and more uniform illumination and better visibility than standard lamps, achieving full brightness more rapidly. They neither emit UV/IR rays nor produce RF interference.

The lamps have a Rynite sleeve, hard-tempered terminals of Nickel Type 200 with bright, tin-lead plate finish.

The LEDtronics midget bi-pin based LED miniature bulbs operate in a wide temperature range of -22°F to +122°F (-30°C to +50°C) and boast a long lifespan – Colour LEDs serve

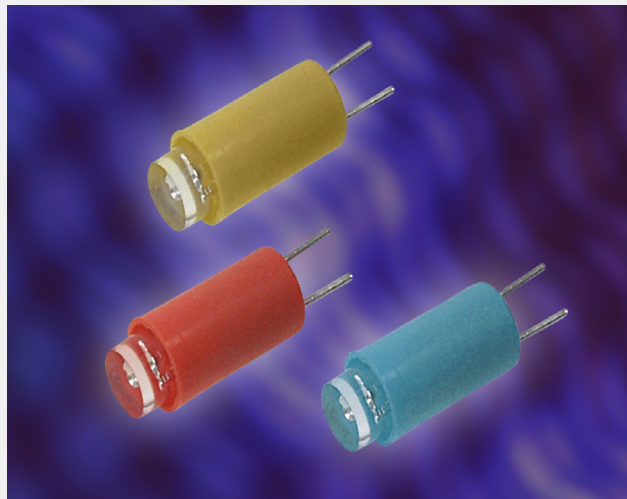


Photo credit: LEDtronics, Inc.

100,000+ hours (more than 10 years), compared to an average of 4,000 hours for incandescent lamps. White LEDs offer lumen maintenance greater than 70 percent at 50,000 hours of operation.

The BPF200-028V Series comes with an unconditional 3-year LEDtronics U.S. factory warranty. The series is available through LEDtronics distributors, and quantity discounts are available.

LiteTrace announces BETA release of TraceContractor platform for networked lighting controls

Shenzhen, China – LiteTrace, a leading global provider of Bluetooth® wireless commercial lighting control components and software, recently announced the Beta release of TraceContractor™, LiteTrace's web platform for smart lighting project management. TraceContractor is a comprehensive commercial lighting tool for simplifying lighting projects and saving labor. TraceContractor helps contractors and project managers to easily manage their lighting projects and users by providing simple administrator tools for project viewing and controlling user access. The platform

will also include energy monitoring, remote diagnosis, pre-commissioning, remote-commissioning, and APIs for inter-operation with 3rd-party systems. TraceContractor is an online software companion designed to operate with LiteTrace's DLC-listed Keilton® APP and Bluetooth® network lighting controls.

TraceContractor notable features, upon full release:

- **Easily manage large lighting projects** – TraceContractor's "Hierarchy View" feature allows a quick view of all sub-projects and zones within a lighting project. Quickly overview all scenes, groups, and individual nodes.
- **User and Access Management** – Project administrators can change QR codes and disable old QR codes to prevent unwanted access.
- **Remote commissioning** – Remotely commission sensor settings, copy existing configuration to new sensors.
- **Asset Tracking** – Upload floor plans and assign positions on the plan to each sensor. Trace position of assets on the map.
- **Heatmapping / HVAC Integration** – Analyze occupancy data to create heatmaps and integrate data with HVAC systems.

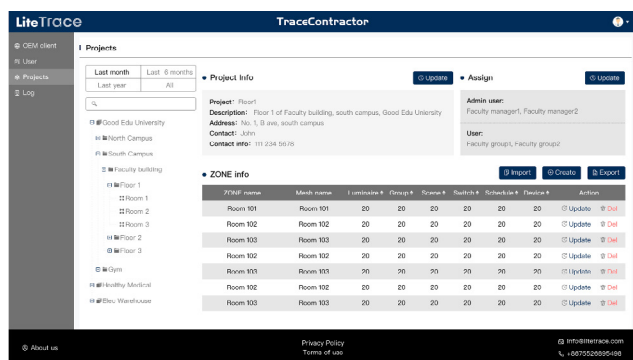


Photo provided by LiteTrace.

Higher luminosity, tighter beam, smaller form factor: ams OSRAM and Crytur technologies combined in new colour-converted laser module



Latest MonaLight laser module combines ams OSRAM's PLPT9 450 LB_E blue laser diode and new phosphor conversion technology from Crytur. Image: Crytur

Premstaetten, Austria and Turnov, Czech Republic – ams OSRAM, a global leader in optical solutions and optical device manufacturer Crytur have revealed that ams OSRAM's PLPT9 450LB_E blue laser diode and new phosphor conversion technology from Crytur are combined in the latest MonaLIGHT laser module.

Crytur's MonaLIGHT B01 module produces a narrow beam of non-coherent, high-power visible light, which can be much more efficiently coupled into an optical fiber or light guide than light from LEDs.

The module is based on a powerful blue laser diode – the ams OSRAM PLPT9 450LB_E, a 5W laser in a TO90 metal can – behind a special transmissive phosphor converter produced by Crytur. Unlike conventional phosphor converters, which scatter a laser beam, the Crytur phosphor shapes the beam to a narrow angle as well as converting the diode's blue light to a broad-spectrum visible light output (spectral bandwidth: 500nm-650nm).

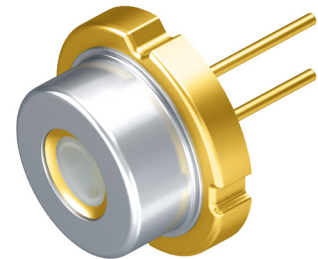
The MonaLIGHT module offers peak luminous intensity up to 7000cd unattainable by LED technology, with wall plug efficiency of at least 80lm/W at luminous flux 1100 lm. The module's beam has a narrow 8° viewing angle

and a very low étendue <math><0.2 \text{ mm}^2\text{sr}</math>. Ideal for space- or weight-constrained applications, the MonaLIGHT module is just 12 mm in diameter and 24.1 mm long, and weighs 18g. Compared to conventional laser modules, the MonaLIGHT offers substantially higher optical efficiency at lower cost. In contrast to other modules, the MonaLIGHT module's output has no unwanted speckle effect.

"The breakthrough in phosphor technology achieved by Crytur takes full advantage of the high luminous intensity of the PLPT9 450LB_E laser diode, enabling the MonaLIGHT module to generate a specific color and high efficiency which are ideal for many applications. To produce a powerful light output with excellent characteristics from such a small and light module is a seriously impressive technical achievement," said Jörg Heerlein, EMEA Head of Product Marketing at the visualization and sensing business line of ams OSRAM.

Modular architecture enables for custom configurations

The MonaLIGHT's modular structure enables Crytur to configure the output to meet specific customer requirements. Customer-specified optical components



The MonaLIGHT laser module is based on a powerful blue laser diode – the ams OSRAM PLPT9 450LB_E, a 5W laser in a TO90 metal can – behind a special transmissive phosphor converter produced by Crytur.

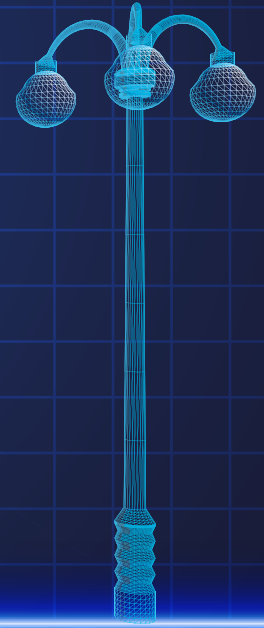
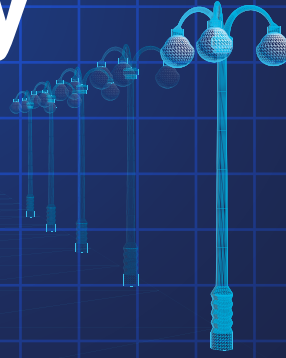
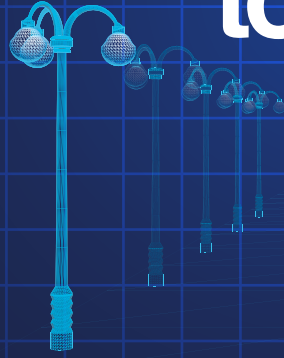
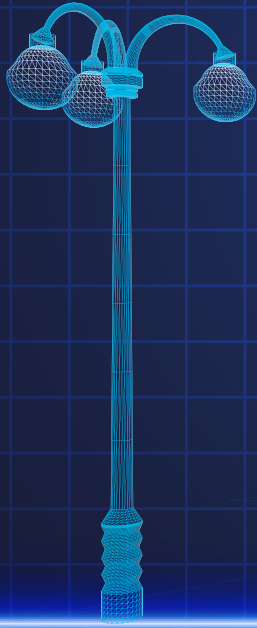
Image: ams OSRAM

such as bandpass spectral filters, light guides and lenses can be built into the module. The high level of integration enables customers to build very compact and highly efficient optical assemblies. This makes the module ideal for use in many applications, including scientific instruments such as visible light or fluorescence microscopes, machine vision systems, and head-up displays in avionics systems.

The MonaLIGHT B01 module is available worldwide via authorised distributors of Crytur products.

The laser diode PLPT9 450LB_E is available in production volumes directly from ams OSRAM and from authorized distributors.

lighting today



Lighting Today is an architectural and entertainment lighting news portal which targets professionals in lighting industry including lighting designers, consultants, architects, interior designers, engineers, developers, estate management, event organisers and end users. We provide multiple platforms for our clients to communicate their target audience effectively. Scan the QR code below to access the quarterly digital magazine on our news portal and social media platforms.

**Scan QR code below to read our news.
Sign up for free subscription.**



Connect with us on social media!



[www.facebook.com/
LightingToday](https://www.facebook.com/LightingToday)



[www.twitter.com/
LightingToday](https://www.twitter.com/LightingToday)



[www.linkedin.com/
groups/3927350](https://www.linkedin.com/groups/3927350)



[www.instagram.com/
lightingtodaysg](https://www.instagram.com/lightingtodaysg)



[www.issuu.com/
lightingtoday](https://www.issuu.com/lightingtoday)

26 > 29
JULY 2023
10.00AM - 7.00PM

KLCC
KL CONVENTION
CENTRE, MALAYSIA

An Event Of:
KLAF2023
KUALA LUMPUR ARCHITECTURE FESTIVAL

ARCHIDEX[®]

THE 22ND INTERNATIONAL ARCHITECTURE, INTERIOR
DESIGN & BUILDING EXHIBITION 2023, MALAYSIA

ASIA'S LEADING ARCHITECTURE
BUSINESS EVENT

SCAN HERE
for more info



www.ARCHIDEX.com.my

Featuring:



Jointly Organised By:



SUBSCRIPTION FORM

Email your order to:
yvonne.ooi@tradelinkmedia.com.sg

PRINT

Please (✓) tick in the boxes.



Southeast Asia Building
Since 1974



Southeast Asia Construction
Since 1994



Bathroom + Kitchen Today
Since 2001

1 year (6 issues) per magazine

Singapore	SGD\$70.00
Malaysia / Brunei	SGD\$120.00
Asia	SGD\$180.00
America, Europe	SGD\$220.00
Japan, Australia, New Zealand	SGD\$220.00
Middle East	SGD\$220.00

1 year (4 issues) per magazine

Singapore	SGD\$40.00
Malaysia / Brunei	SGD\$90.00
Asia	SGD\$110.00
America, Europe	SGD\$160.00
Japan, Australia, New Zealand	SGD\$160.00
Middle East	SGD\$160.00

DIGITAL



Lighting Today
Since 2002

Lighting Today

is available on digital platform.
To download free PDF copy,
please visit:

<http://lt.tradelinkmedia.biz>



Security Solutions Today
Since 1992

Security Solutions Today

is available on digital platform.
To download free PDF copy,
please visit:

<http://sst.tradelinkmedia.biz>

Personal Particulars

Name:

Position:

Company:

Address:

Tel:

E-Mail:

IMPORTANT

Please commence my subscription in
(month/year)

Professionals (choose one):

Architect

Landscape Architect

Interior Designer

Developer/Owner

Property Manager

Manufacturer/Supplier

Engineer

Others

Bank transfer payable to:

Trade Link Media Pte Ltd

Bank Details

Account Name:

Trade Link Media Pte Ltd

Account Number:

033-016888-8

Name of Beneficiary Bank:

DBS Bank

Address of Beneficiary Bank:

12 Marina Boulevard, DBS Asia Central,
Marina Bay Financial Centre Tower 3,
Singapore 018982

Country:

Singapore

SWIFT Address/Code:

DBSSSGSG

PAYNOW to:

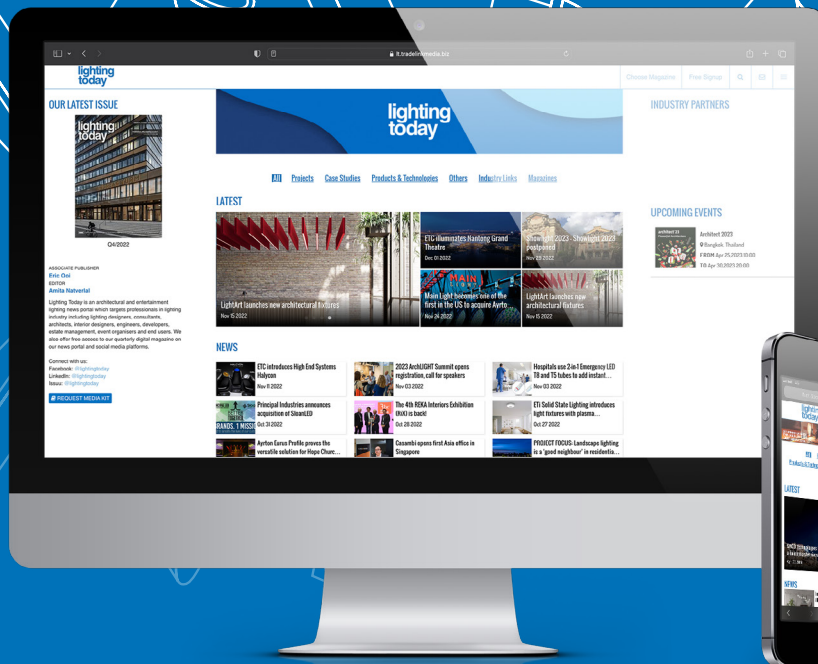
Trade Link Media Pte Ltd

**PAY
NOW**



PAYNOW option is only
applicable for Singapore
companies only.

Company Registration
Number: 199204277K



ADVERTISE WITH US TODAY!

Email us at info@tradelinkmedia.com.sg



Scan to visit our website

